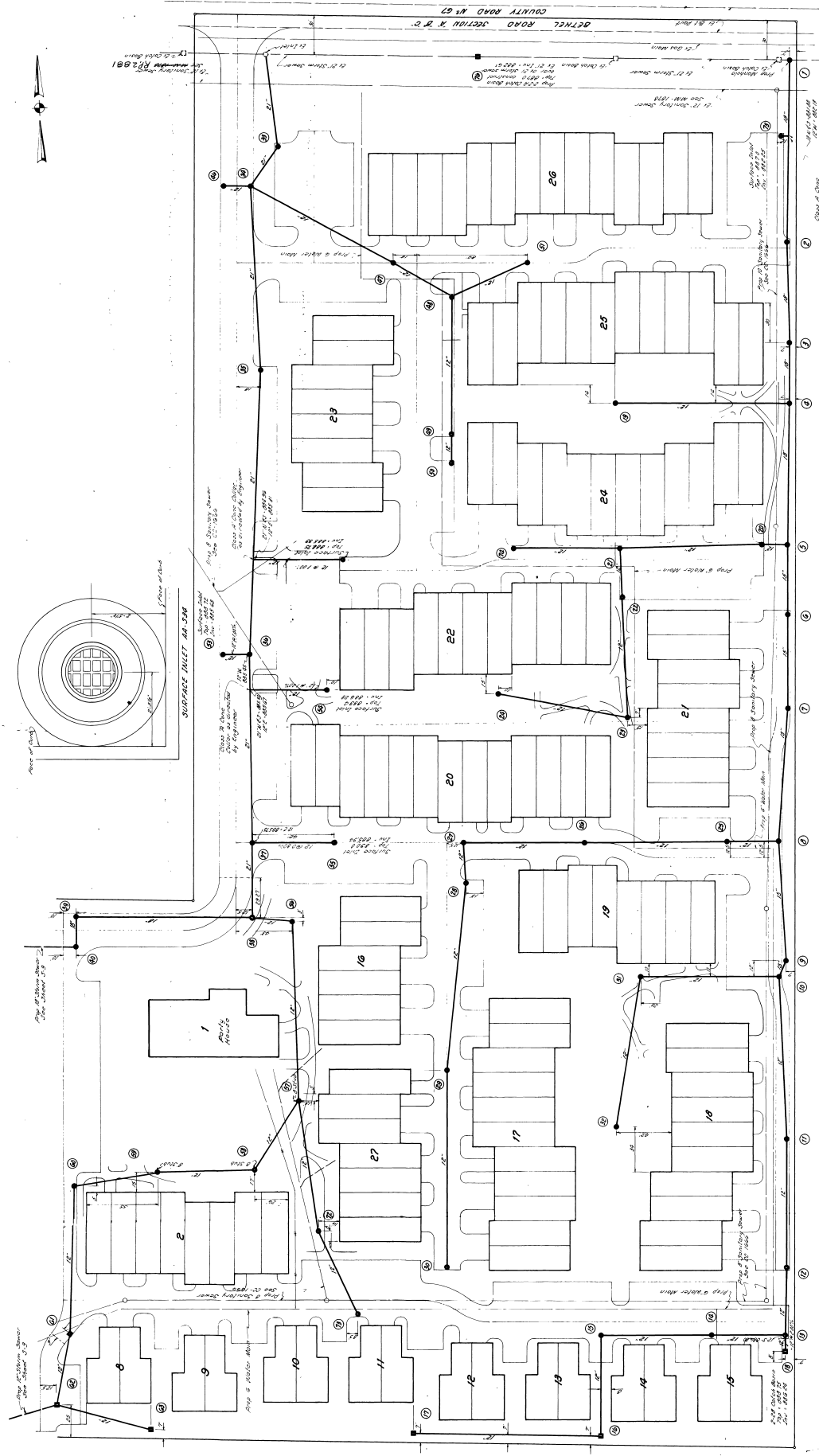


SHEET S-8	11	OF	1/4" STORM SEWER
			CHICAGO
JOB NO	7104	CHECKED	DATE
REVISIONS		APPROVED	9/27/71

STORM SEWER IMPROVEMENT  
RITTENHOUSE SQUARE

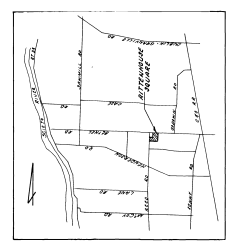
BAUER, BROADWITZ & MERCHANT  
Consulting Engineers

SCALE: 1"=40'  
DATE: 9/27/71  
PROJECT: STORM SEWER IMPROVEMENT  
SHEET: S-8



**GENERAL NOTES**

The proposed storm sewer, construction and drainage improvements shown on this plan are to be installed in accordance with the City of Columbus Engineering Department's Standard Specifications for Storm Sewer Construction, 1968 Edition, and the City of Columbus Engineering Department's Standard Specifications for Storm Sewer Construction, 1968 Edition, and the City of Columbus Engineering Department's Standard Specifications for Storm Sewer Construction, 1968 Edition. The proposed storm sewer, construction and drainage improvements shown on this plan are to be installed in accordance with the City of Columbus Engineering Department's Standard Specifications for Storm Sewer Construction, 1968 Edition, and the City of Columbus Engineering Department's Standard Specifications for Storm Sewer Construction, 1968 Edition. The proposed storm sewer, construction and drainage improvements shown on this plan are to be installed in accordance with the City of Columbus Engineering Department's Standard Specifications for Storm Sewer Construction, 1968 Edition, and the City of Columbus Engineering Department's Standard Specifications for Storm Sewer Construction, 1968 Edition.



LOCATION MAP

Approved by: *[Signature]*  
Date: 9/27/71